



## OneKEY Plunger Lock

For metal frame, wood bypass and glass sliding doors.



Plunger II and III Locks provide superior protection and can be easily retrofittable for pre-drilled holes in existing furniture. Operational efficiency, improved customer service and speed to checkout makes OneKEY Lock the perfect locked cabinet solution.

- Sales associates have access to locked display cabinets, delivering a more timely response to customers
- Enhanced interaction with customers results in increased sales

---

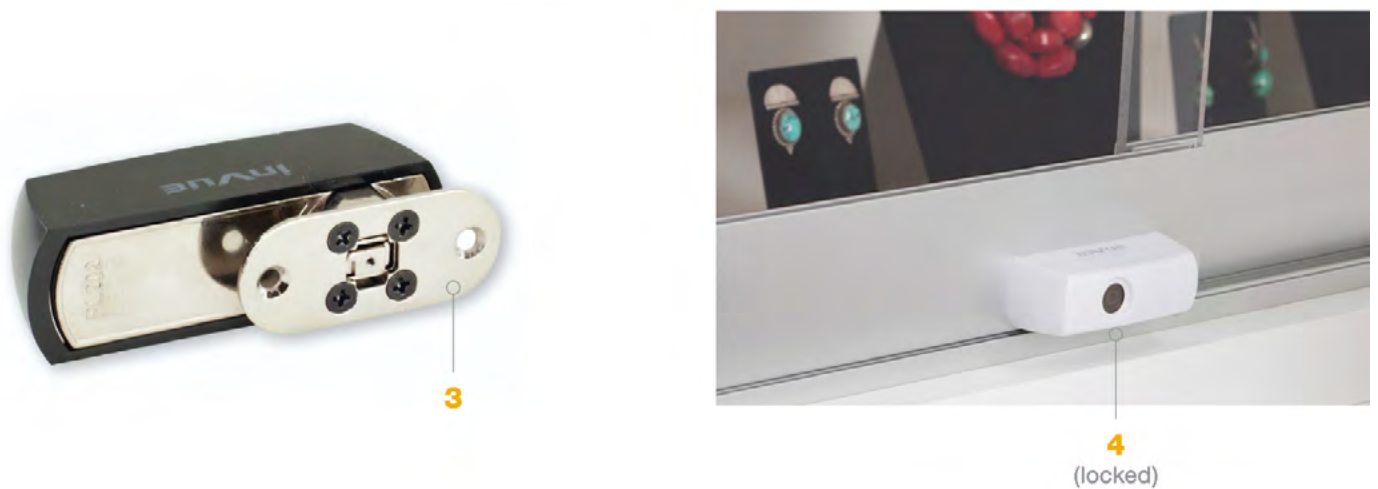
**EXCLUSIVELY DISTRIBUTED IN AUSTRALIA BY SABEL**

Visit [www.sabel.com.au](http://www.sabel.com.au) • P 1300 551 662 • E [sales@sabel.com.au](mailto:sales@sabel.com.au)

**SABEL**

## Plunger Lock II Features and Benefits

- 1 Designed for glass sliding and wood doors
- 2 Simple to retrofit and install — lock mount quickly to metal arm of sliding panel doors (22mm (0.87") hole required)
- 3 Includes wood and metal screws and mounting bracket
- 4 Lock Status Indicator provides visual confirmation that lock is locked or unlocked
- 5 Plunger Lock is part of the exclusive InVue single key IR Ecosystem™



**EXCLUSIVELY DISTRIBUTED IN AUSTRALIA BY SABEL**

Visit [www.sabel.com.au](http://www.sabel.com.au) • P 1300 551 662 • E [sales@sabel.com.au](mailto:sales@sabel.com.au)

# SABEL

## Plunger Lock III Features and Benefits

- 1 Designed for glass sliding doors
- 2 Simple to retrofit and install — fits easily to glass bypass doors (designed to fit 22mm to 32mm (0.87"-1.26") hole)
- 3 Screws, mounting bracket and optional spacer rings included
- 4 Spacer rings allow mounting in holes ranging from 22mm to 32mm (0.87"-1.26")
- 5 Lock Status Indicator provides visual confirmation that lock is locked or unlocked



## IR Ecosystem™

The Plunger Lock is part of the exclusive InVue IR Ecosystem™, a storewide single key solution that improves customer service, increases sales and provides high theft protection.

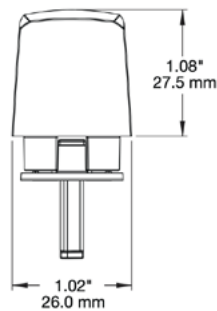
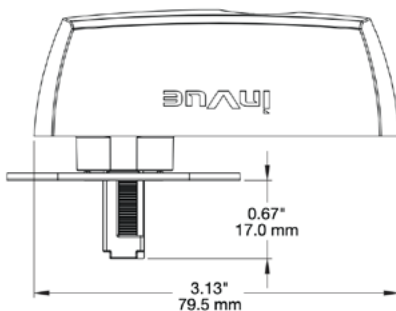
InVue has a full line of Smart Locks that are designed for all types of glass, wood and metal locked cabinets including:

- Pull out drawers
- Swing out doors
- Sliding bypass doors

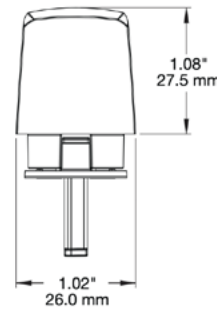
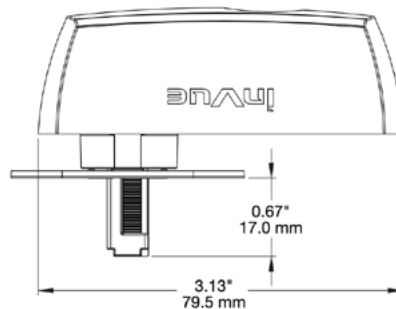


## Specifications

### PL202:



### PL203:



©2025 InVue Security Products. No endorsement of InVue products has been made by any of the manufacturers of the products shown. Product is sold pursuant to InVue's warranty which can be found at [invue.com/warranty](http://invue.com/warranty).

Part of ASSA ABLOY Group

**EXCLUSIVELY DISTRIBUTED IN AUSTRALIA BY SABEL**

Visit [www.sabel.com.au](http://www.sabel.com.au) • P 1300 551 662 • E [sales@sabel.com.au](mailto:sales@sabel.com.au)

# SABEL