

WS2 & W2000

High security, integrated charging display for an authentic wearable experience



CONSISTENT DISPLAY AESTHETIC

Streamlined and consistent display placement minimises visual clutter.

RELIABLE ALARMING & CHARGING

OEM or Apple charging options to keep wearables powered and always ready for customer interaction.

EASE OF OPERATION

Easy-to-install universal flex sensor minimises false alarms and improves operational efficiency.

WS2 FEATURES AND BENEFITS

- 1** Two display options available: exposed cord or recoiler.
- 2** Magnets in both the cradle and band clamp attract for perfect placement.
- 3** Anti-slip pad on cradle ensures device stability while on display.
- 4** Easy-to-install flex sensors protect both smartwatch head and band and minimise false alarms.
- 5** Compatible with new Zips platform.
- 6** Consistent visual merchandising when displayed with OnePOD.
- 7** Two charging options: integrated Apple charging and OEM charging integrated in cradle.

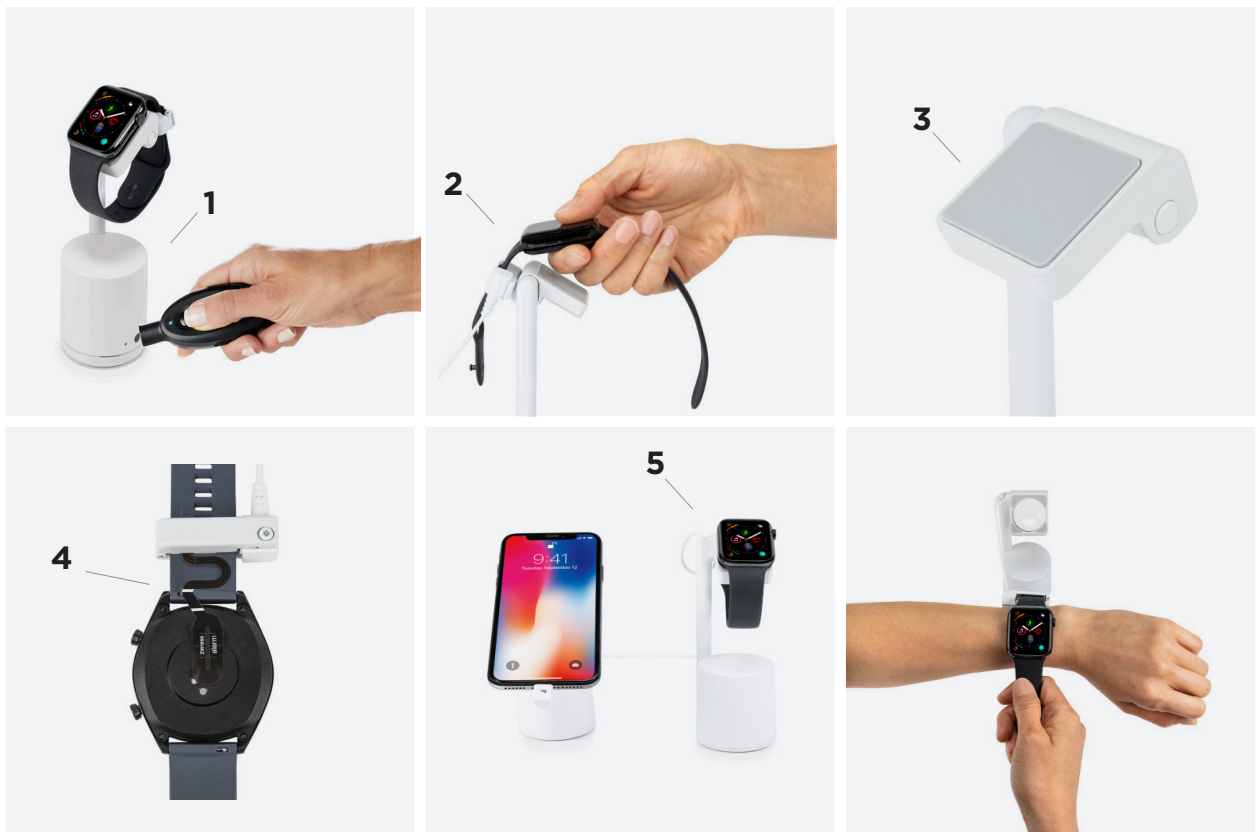


WS2 is part of the exclusive InVue OneKEY ecosystem™, a storewide single key solution that improves customer service, increases sales and provides high theft protection.

OneKEY™
ecosystem

W2000 FEATURES AND BENEFITS

- 1 Integrated alarming eliminates the need for separate alarm unit.
- 2 Magnets in both the cradle and band clamp attract for perfect placement.
- 3 Anti-slip pad on cradle ensures device stability while on display.
- 4 Easy-to-install flex sensors protect both wearable head and band, and minimise false alarms.
- 5 Recoiler cable exits at top of the stem for an enhanced customer experience.
- 6 Two charging options: integrated Apple charging and OEM charging integrated in cradle.
- 7 Consistent visual merchandising when displayed with OnePOD.



W2000 is part of the exclusive InVue OneKEY ecosystem™, a storewide single key solution that improves customer service, increases sales and provides high theft protection.

OneKEY™
ecosystem

©2020 InVue. No endorsement of InVue products has been made by any of the manufacturers of the products shown. Product is sold pursuant to InVue's warranty which can be found at invue.com/warranty.